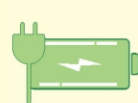
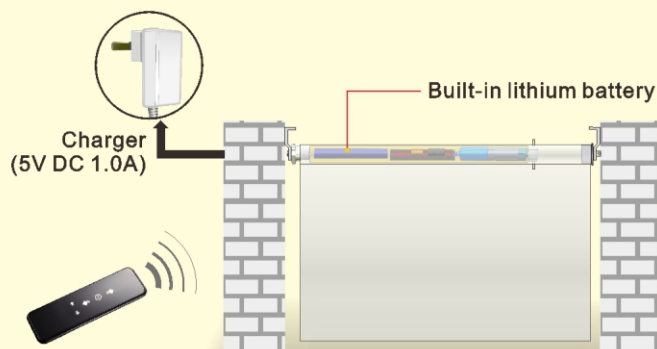


I .Features

- Energy Saving Patent.
- Built-in Rechargeable Lithium Battery Pack.
- It has automatic correction function for the displacement generated by braking.
- The built-in control parts of motor are sealed well for better safety.
- It's easy to switch the mode between inching and interlock and control operation direction.
- Electronic limits setting, 6 limits can be set (2 end limits and 4 middle limits).
- Short circuit protection & open circuit protection for sensor.
- Built-in low power Bluetooth module and APP intelligent control function.

II .Application

It can be fully charged within 4 hours,
Please unplug the charger when fully charged.



CAUTION!
Please charge lithium battery devices at least 6h every 6 months to extend battery life.

III .Operation Instruction

1.Power ON/OFF * After switching off power, the motor will not be able to receive remote signals.

Power ON



Press and hold the PROG button for 1s until red light comes on

The motor is now ON

Power OFF



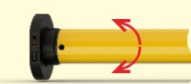
Press and hold the PROG button for 7s(The motor jogs once at 1st second)

The red light flashes 3 times, the motor is off

2.Programming Preparation



Press PROG button for 1s



Motor jogs once. The motor is now in setting mode

3.Paring remote



Press UP button under paring mode



Motor jogs once, the motor and remote are now paired

4.Change Direction



Press and hold STOP button on programmed remote for 5s



Motor jogs once. The motor is now in setting mode

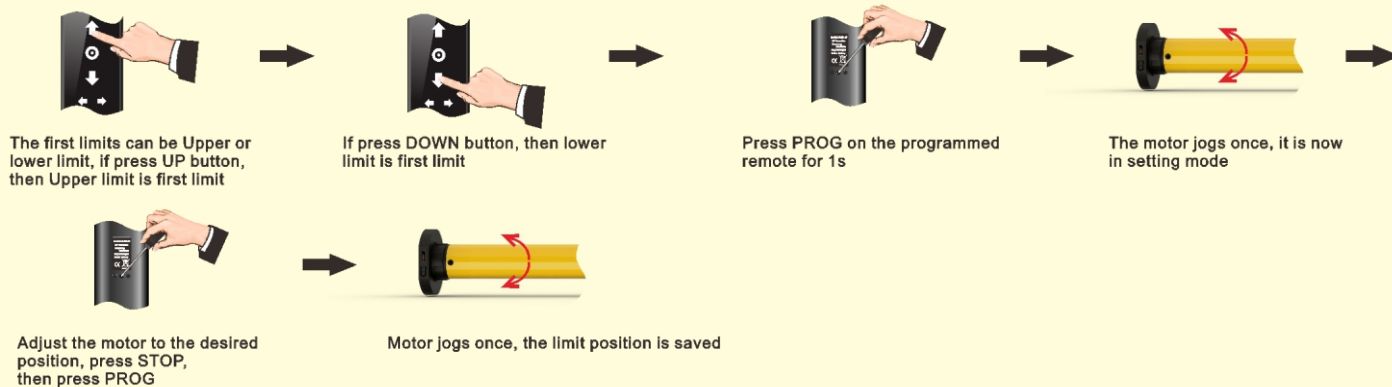


Under the programming preparation, press the remote "DOWN" button



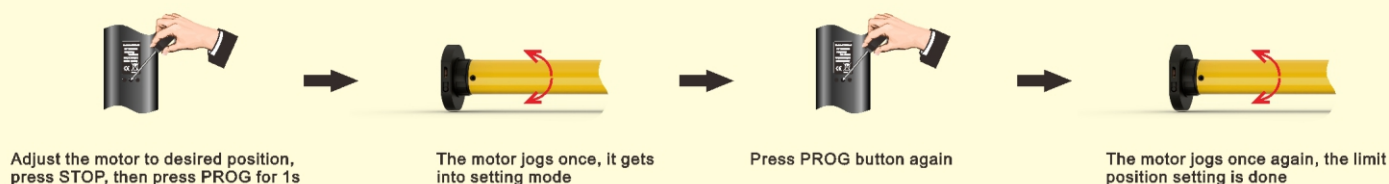
Motor jogs once, the motor direction is now reversed.

5. First limit position setting

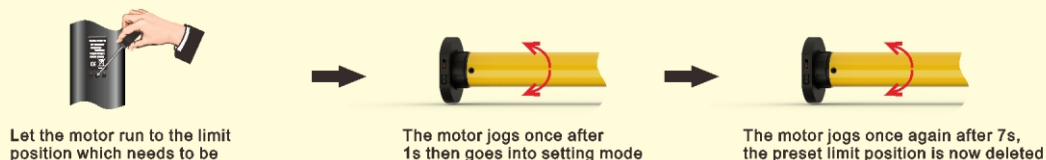


6. Other limit position setting

* If there's no any action within 30's, the motor will exit from limit position preparation automatically



7. Delete the limit position



8. Reset motor

* Make sure the interval between every actions less than 1s

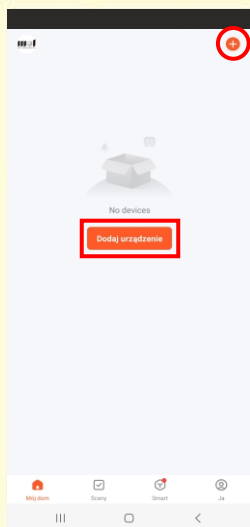


Jeśli przez 30 s nie będzie nowych sygnałów wówczas silnik automatycznie wyjdzie z trybu „Przygotowanie programowania”.

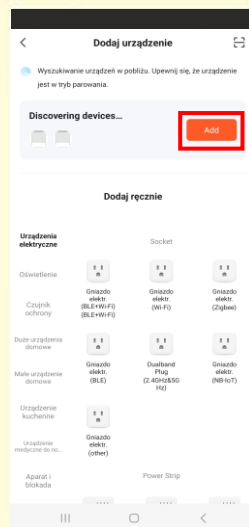
9. APP instructions



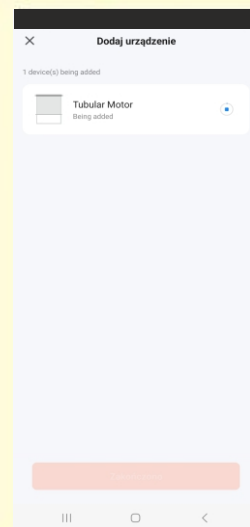
1.A.Scan the QR code ,then download and install APP. B.Search for 'TuyaSmart' or 'A+ Home' to download and install the smart App.please make sure the phone bluetooth is on before operation.



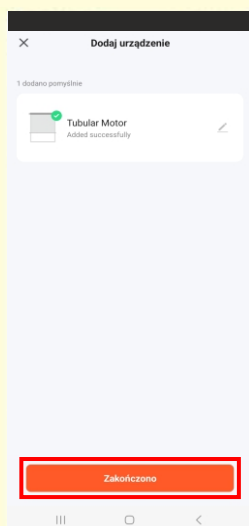
2.On the interface"my home", choose"Add a device"or click "+"at the up right corner



3.On the interface ,you will find "Devices to be added",choose go to add.For no response,4 short and 1 long press on motor PROG button to reset



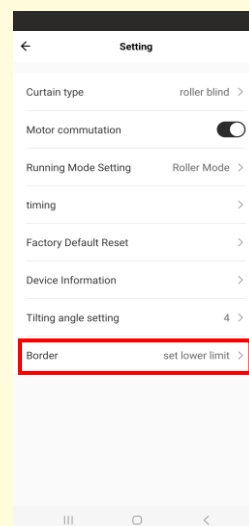
5.Waiting for connecting motor



6. Click"Done",you finished adding motor successfully



7.On the interface,you will have "UP,DOWN STOP" buttons for controlling motor.Click"More" for for entering interface of setting



8.On the interface of setting, for further operations

14. Supplemental Instruction

- A. The first and second position are Upper/Lower limit positions. Other four are intermediate positions.
- B. After the Upper/Lower limit position are set, all the intermediate positions must be set between the Upper and Lower limit.
- C. The Upper and Lower limit position can only be fine-tuned once set. It can only be removed by resetting the motor.
- D. Press the UP or DOWN button once and the motor will move to the next pre-set limit position. When the upper position has been reached, the Up button will be unresponsive. When the lower position has been reached, the Down button will become unresponsive.
- E. Press and hold the UP or DOWN button until the indicator on the programmed channel flashes twice, release, then the motor will move to the Upper or Lower limit position without stopping at any intermediate position.
- F. If battery is low to 6.2V, red light will flash, motor will switch to jog mode. If low to 5.5V, motor will stop working.
- G. The light turns to red during recharging. It turns to green when it is full recharged.

IV. Trouble Shooting

Item	Problem	Matter	Shooting
1	The motor doesn't work and no any move	A. Power is cut off B. Shortage voltage protection C. Incorrect installation leads to motor sticking	A. Switch it on by button B. Start the motor after charging it for 6 hours C. Check and make sure all parts are installed properly
2	The motor stops suddenly during operation	A. Shortage voltage protection B. Protect the motor when encounter obstacle	A. The motor will resume to work after being charged B. Check if there is something stuck or overloading
3	APP can not be connected with Motor	A. Bluetooth is not open B. Motor is connected by other mobile phones	A. Switch on the bluetooth of mobile phone B. Reset bluetooth and connect again